

Available October 31, 2024



FOR LEASE

ALFREDO MEJIA, CCIM

Principal
(626) 841-0599
alfredo@cibare.com
01340251, California

KATELYN MEJIA

Associate
(626) 303-1818
katie@cibare.com
02069096, CA

FILIPPO FANARA

Broker-Principal
(626) 303-1818
filippo@cibare.com
01198019, CA



PROPERTY DESCRIPTION

Approximately 5,000 SF of warehouse space located in this multi-tenant building. The unit has a small office space and 16' clear height in the warehouse portion. Property is located near the Monrovia Gold Line Station and has easy access to the 210 Freeway.

Call for more information and to schedule a tour!

Take the Virtual Tour:
<https://my.matterport.com/show/?m=Dj3FC161uEn>

CIBA Real Estate, DRE 01198019



SUMMARY

Lease Rate: \$1.60

Lease Term: 3-5 Years

Available SF: 5,000 SF

Building SF: 20,160

Lot Size: 36,705 SF

Grade Doors: 1

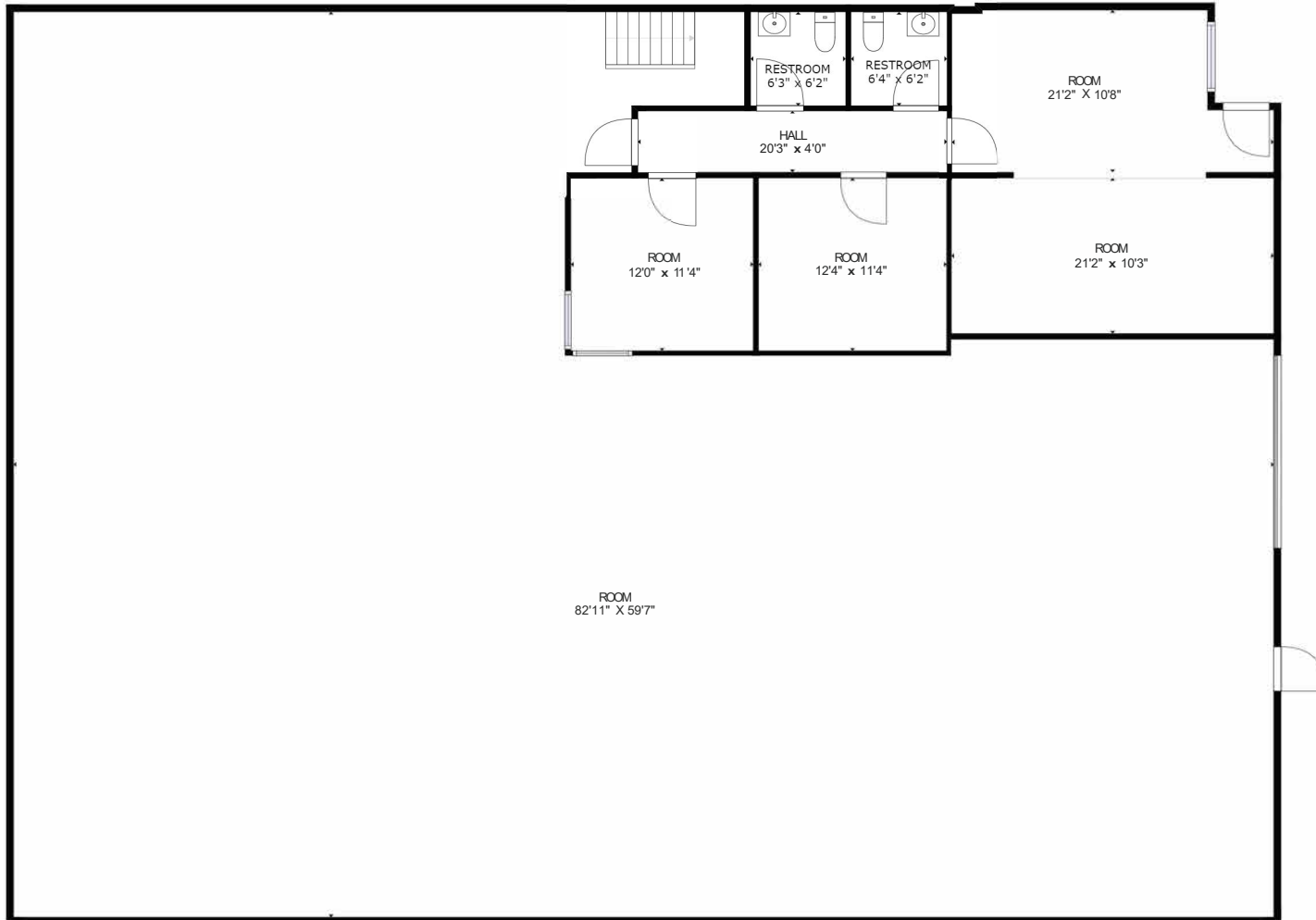
Clear Height: 16'

Yard: No

Zoning: Light
Manufacturing

FLOORPLAN

252 KRUSE AVENUE



FLOOR 1



CIBA REAL ESTATE
316 W. Foothill Boulevard
Monrovia, CA 91016

ALFREDO MEJIA, CCIM
Principal
O: (626) 841-0599
C: (626) 841-0599
alfredo@cibare.com
01340251, California

KATELYN MEJIA
Associate
O: (626) 303-1818
C: (626) 241-2775
katie@cibare.com
02069096, CA

FILIPPO FANARA
Broker-Principal
O: (626) 303-1818
C: (626) 255-1124
filippo@cibare.com
01198019, CA